



Five Feet to Fitness™

A revolutionary room has arrived to hospitality, so you can pursue fitness and wellbeing on your terms. With Five Feet to Fitness™, you can work out in the privacy of your room with over 11 different fitness accessory options.

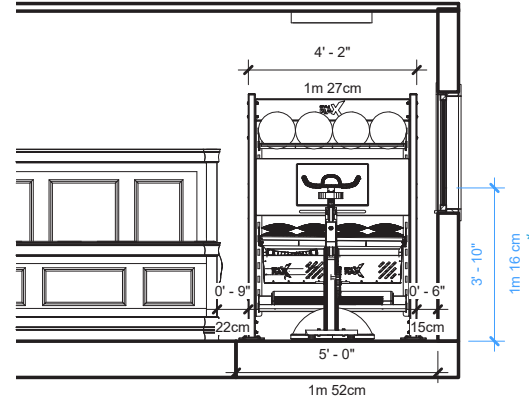
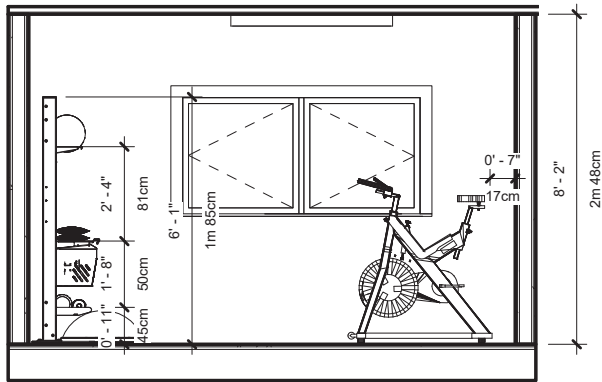
Movement coaching delivered via the system's 24-inch HD display interacts seamlessly with audible guidance by Aktiv master trainers. Select from all the hottest workout genres today.

INCLUDES:

- | | |
|----------------------------|----------------------------|
| 1. UNIVERSAL BALL RAX (x1) | 7. BOSU |
| 2. VIRTUAL KIOSK (x1) | 8. AKTIV FLOOR GRAPHIX KIT |
| 3. FREE WEIGHT RAX (x1) | 9. SCHWINN BIKE |
| 4. RAX BINS (x1) | |
| 5. TROUGH RAX (x1) | |
| 6. FREE ANCHOR™ KIT (x1) | |

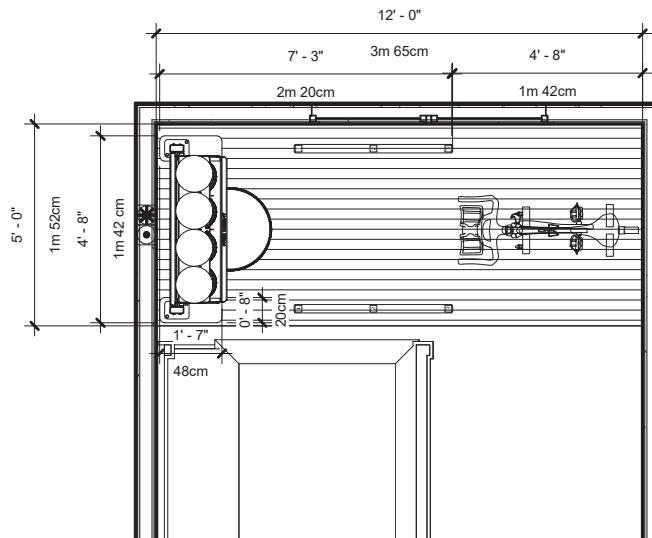


FFTF | FREE ANCHOR STREAMLINE
HILTON - FIVE FEET TO FITNESS™



**FUNCTIONAL
OCCUPANCY**

**1-2
USERS**



*Dedicated Electrical Outlet required,
*Dedicated CAT5 or CAT6 for data encouraged
*Outlet recommended @ 46" AFF

Note: 70" cords can connect to standard height outlet (optional).

FEATURES:

- Functional Training on Demand™
- 24-inch HD display kiosk
- 200+ Guided Exercise Tutorials
- Focused Footprint

FINISHES:



FRAME COLOR:
Storm



RAX COLOR:
Gun Metal Grey

FFTF | FREE ANCHOR STREAMLINE
HILTON - FIVE FEET TO FITNESS™

Configuration Footprint:
4'-5" x 7'-3"
(1 m 34 cm x 2 m 21 cm)

Training Area:
5' x 12'
(1 m 53 cm x 3 m 66 cm)